

---

*Pacific States Marine Fisheries Commission*

# PTAGIS NEWS



---

Volume 1 Issue 4

April 1996

---

## In this issue..

- [PTOC Operations Status](#)
  - [Test Tags](#)
  - [New Features In PTAGIS 3 Database](#)
  - [Year To Date Tagging Data Summary](#)
- 

## PTOC Operations Status

PIT-Tag Operations Center began interrogation site equipment operations during March in order to perform preliminary checks of system electronics and communications. Since this time, Fixed Reference Tags (aka "timer tags") have been firing at Lower Granite, Little Goose, Lower Monumental and McNary facilities. Interrogation files containing these "test tags" have been collected since then.

One key change to the interrogation systems electronics prior to this season was installation of "CRC Reader Firmware". This change reduces the probability of "mis-reads" significantly.

The Corps of Engineers "watered-up" the juvenile fish bypass facilities beginning with Lower Granite Dam on March 27. Initial tuning of interrogation equipment was performed at that time. Little Goose and Lower Monumental juvenile fish bypass facilities were watered-up for fish collection a week later, April 1, 1996. Mechanical problems have delayed the start-up of the juvenile fish bypass system at McNary Dam, however it is anticipated that that facility will water-up on Monday, April 15.

PIT Tagged fish will be diverted to the river, via PIT-Tag actuated separation gates at all Snake river facilities. Transportation of fish at McNary is not scheduled until sometime in June.

We are beginning to see the number of PIT Tagged fish increase at all interrogation sites. As hatcheries begin to increase releases, PIT interrogations will be increasing.



---

## Test Tags

PTOC field maintenance uses two tools to assure that the interrogation systems are working at peak

performance. One of these tools is simply a PIT-Tag inserted into a wooden stick. These "fish sticks" or "test sticks" are routinely passed through interrogation monitors in order to assure that the coils within the monitor are working. If the coils are not working, then the coils are tuned or other problems are diagnosed and fixed. All PTOC "test sticks" are tag codes that begin with the numbers "090".

The other tool that we use is called a "fixed reference tag" or timer tag. This "tag" is really an electronic circuit board that is timed to send a set of two known tag codes to the interrogation coil in alternating sequence, once every two hours. The absence of both of these known tag codes at a specific coil indicates the failure of that coil. "Timer tags" are tag codes that begin with the hexadecimal numbers, "0B0B", "Oh Bob!"

Any agencies that have interrogation equipment in use at traps, weirs or other locations and utilize some type of test tag should register those tags with PTOC so that those tags are not interpreted as real fish. PTOC can provide pre-registered test sticks at the request of an Agency. If you wish to register your own test tags please use the format specified in II.F of the "1996 PIT Tag Specification Document."

Unregistered test tags can show up as "Orphan" tag records.



---

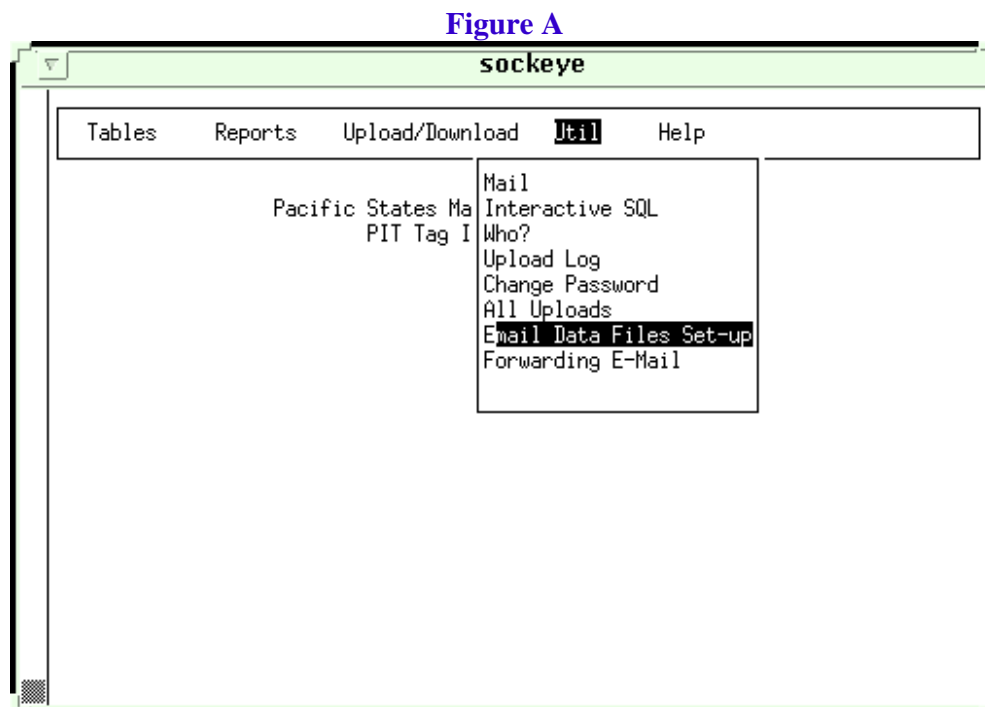
## New Features In PTAGIS 3 Database

A new feature available in the PTAGIS 3 database is the ability to e-mail data files instead of uploading them. Also, you are able to create a forwarding address for your e-mail messages to be sent to you, rather than leaving them on the PTAGIS server.

To use the e-mail method for uploading data files (tagging, release, monitored release, corrections, mortality), you first need to register.

### Registration

Select the "Util" pull-down menu as shown in Figure A.



Of the three fields that appear on the registration screen, the E-mail Address to Add is the only field available for user input. Use the Tab key to move to this field and key in the address you will be sending the data files from, then press F2. (This is used for user verification only.)

**Figure B**

**sockeye**

Util->Email Data Files Set-up->PTAGIS Data E-Mail Registration

If you will be transmitting PTAGIS data (Tagging, Release etc) files via E-Mail then use this form to give us the E-Mail address that you will be sending the files from. We will use this information to verify that data sets are only processed from known locations by known users.

Username: jen

E-mail Address to Add

Existing E-mail Addresses (Delete from this list)

jen@psmfc.org

Add New(F2) Del Existing(F4) Exit(F3)

The Existing E-mail Addresses field allows you to view addresses already set-up, and delete addresses you no longer will be using. Use the arrow keys to navigate Existing E-mail Addresses. To delete an address, select it and press .

## E-Mailing Data

To mail a file, address it to [pitdata@psmfc.org](mailto:pitdata@psmfc.org). Put the following text in the subject field:

Subject Field	File Type
"TAGGING"	Tagging
"RELEASE"	Release information
"MONITORED RELEASE"	Monitored release
"MORT"	Mortality
"CORRECTIONS"	Corrections

## Forwarding Mail

If you want to forward your mail to your desktop system, choose the Forwarding E-Mail option on the Util pull-down screen (see Figure A). The screen in Figure C displays.

**Figure C**

**sockeye**

**Util->Forwarding E-Mail->PTAGIS E-Mail Forwarding**

Use this form to enter an E-Mail address that you want all of your E-Mail forwarded to i.e. all E-Mail received by PTAGIS, addressed for you, will be sent to the address you enter below and will not remain on the PTAGIS server.

Username:

Enter E-mail Address To Forward Your Messages To

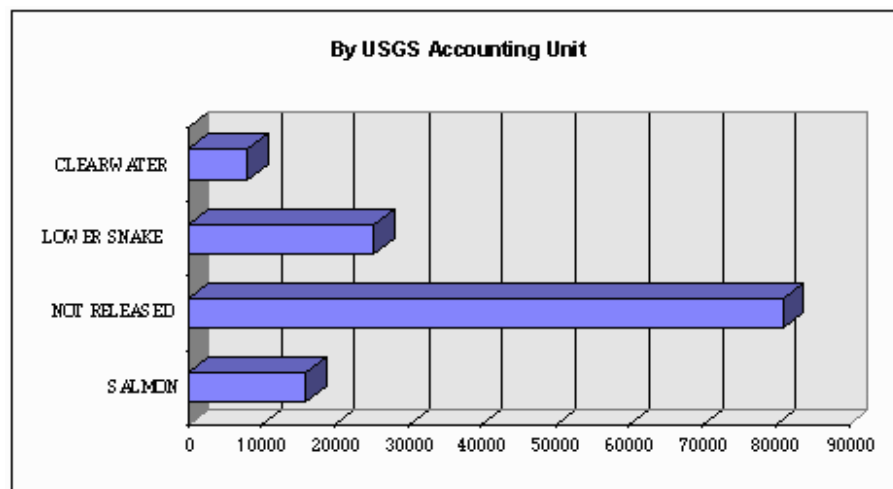
Add Forwarding Address(F2) Stop All Forwarding(F4) Exit(F3)

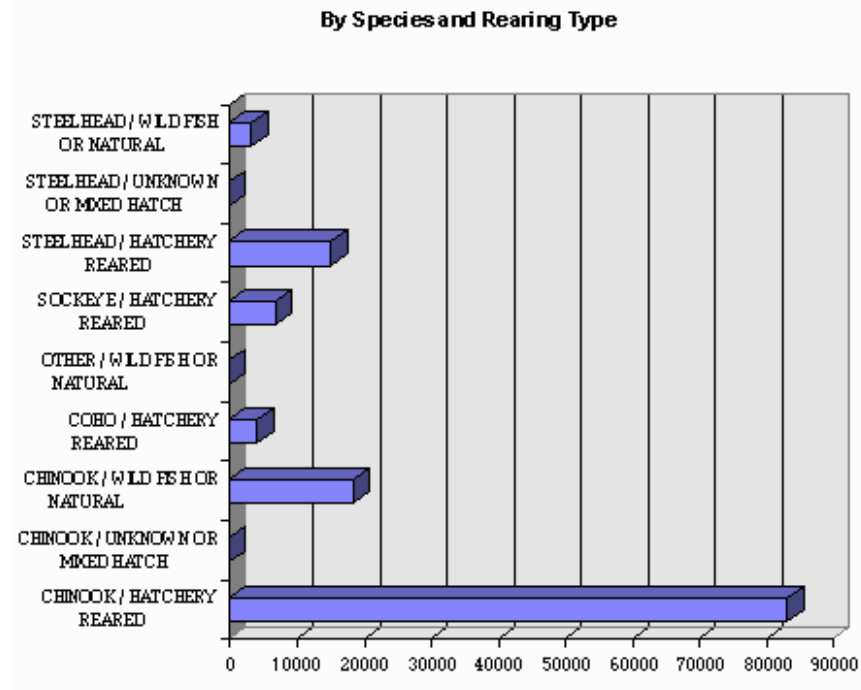
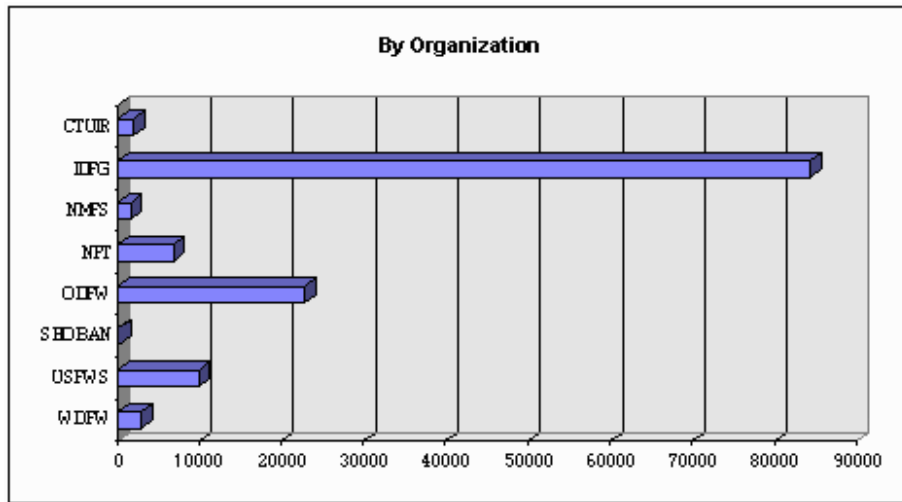
In the Enter E-mail Address To Forward Your Messages To field, enter the address that you want your e-mail forwarded to, then press F2. To stop forwarding your e-mail press F4.



## Year To Date Tagging Data Summary

The following is a summary of the 130,687 tag data records collected for the 1996 Migration year as of April 12, 1996.





**Look in the next issue for:**

Information about "Orphans"  
 Information about "Mis-Reads"



*Last modified:*